

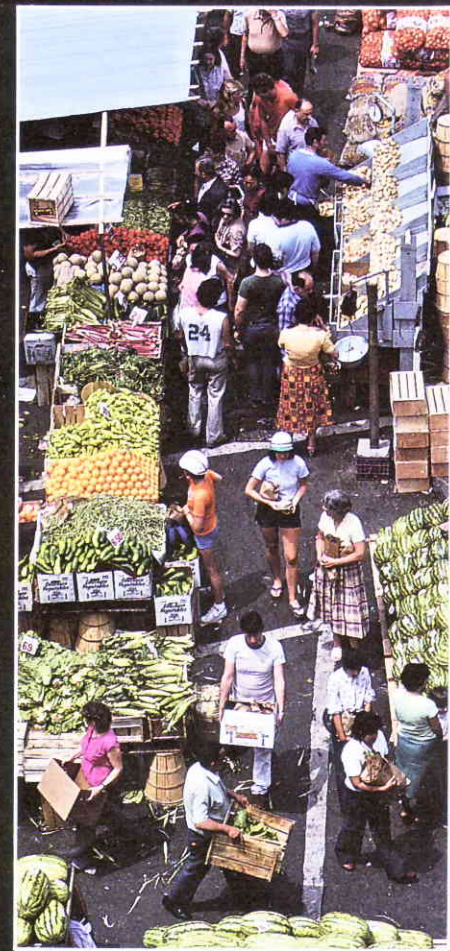
# The Swintec SW20

## Electronic Cash Register

For any kind of business...  
any place at all.



Runs on  
batteries or  
standard electric  
current



Outdoor Vendors on the street.



Snack Trucks on the road.



Flea Markets and Fairs under a tent.



Florists and Greenhouses in the field.

# The Swintec SW20 Electronic Cash Register

Even if your retail business runs in places where electricity doesn't, then you should check out the Swintec SW20. This electronic cash register is specially designed to offer the flexibility of battery operation, so your business keeps running smoothly wherever you go.

When it comes to making the most of your retail operation, the Swintec SW20 Cash Register has everything you need *and* everything you want. In other words, it's packed with versatility and priced to fit comfortably in any business budget.

With features like these, the Swintec SW20 Cash Register proves that you *can* take it with you . . .

- AC adaptor or battery operation.
- Pre-programmed prices help save time and keystrokes by allowing quick repeat of multiple items.
- Dual departments.
- Fluorescent display.
- Management reports give you summarized breakdowns of registered sales by department, tax categories, etc.
- Lockable cash drawer.
- Running grand total.
- Operator error alert sounds an audible tone with an improper key sequence is entered.
- Preset tax key with override provides convenient programming of tax rates, tax tables, and taxable/non-taxable breakdowns. What's more, this can be manually overridden for items that are excluded or included within certain categories.
- Memory Backup System
- Swintec's famous "Magic Touch" keyboard

## Additional Specifications

<b>Display:</b>	9 Character, Fluorescent	<b>Power Source:</b>	AC Adaptor (included) or 4 "C" batteries
<b>Numeric Input:</b>	Up to 7 digits	<b>Dimensions:</b>	5.9" (H) x 16.6" (D) x 12.7" (W)
<b>Ink Source:</b>	Ink Roll	<b>Weight:</b>	9.5 Lbs.
<b>Printer Type:</b>	Serial		
<b>Printer Tape:</b>	2¼" roll		

**Swintec**<sup>®</sup>  
CORPORATION

320 West Commercial Avenue  
P.O. Box 356, Moonachie, NJ 07074